



21 Greencroft Street, Salisbury, Wiltshire, SP1 1JF

£1,150 PCM



## About The Property

A modern end of terrace house in a convenient city centre location with an allocated parking space. No onward chain.

- Modern end-of-terrace house in a prime city centre location
- Contemporary kitchen with granite worktops, underfloor heating & integrated appliances
- Spacious sitting/dining room with electric fireplace and sliding doors to the garden
- Low-maintenance rear courtyard garden with paving, artificial lawn, electric awning & gated rear access
- Two generous double bedrooms with built-in wardrobes and new carpets
- One bedroom features a charming view of the cathedral spire
- Stylish bathroom with new white suite, thermostatic shower over bath & new flooring
- PVCu double glazing and gas-fired central heating throughout
- Allocated parking space in Spinners Court, plus visitor spaces available
- Large loft space offering excellent storage



2



1



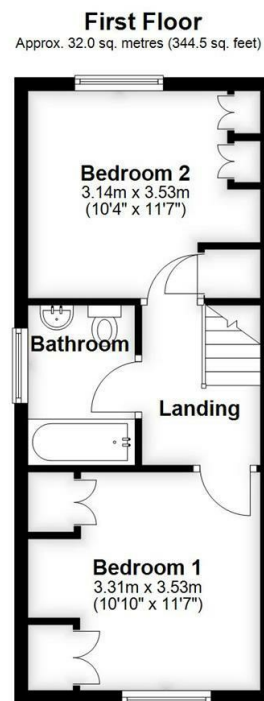
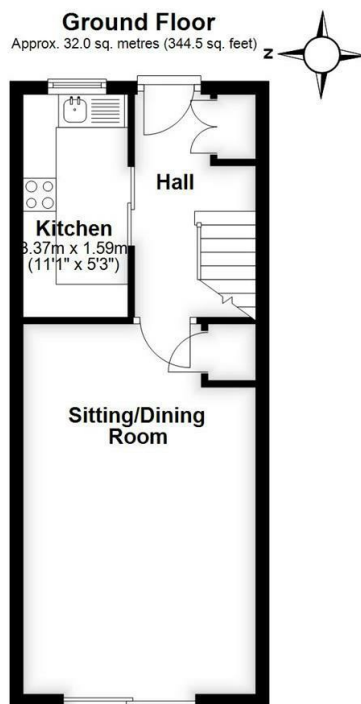
1



689.00 sq ft







Total area: approx. 64.0 sq. metres (689.0 sq. feet)

## Further Information

Let available date: 1st December 2025 NB: This date is provisional and will only be confirmed once referencing has been successfully completed.

Property type: House - Terraced

Furnish type: Not specified

Deposit: £1,325

Local authority: Wiltshire Council

Council Tax: Band C

EPC: C(72)

### Energy Efficiency Rating

	Current	Potential
Very energy efficient - lower running costs		
(92 plus) <b>A</b>		
(81-91) <b>B</b>		<b>89</b>
(69-80) <b>C</b>	<b>72</b>	
(55-68) <b>D</b>		
(39-54) <b>E</b>		
(21-38) <b>F</b>		
(1-20) <b>G</b>		
Not energy efficient - higher running costs		
<b>England &amp; Wales</b>	EU Directive 2002/91/EC	